

How to create pop-up menus

Pop-up menus are menus that are displayed in a browser when a site visitor moves the pointer over or clicks a trigger image. Items in a pop-up menu can have URL links attached to them for navigation.

You can use pop-up menus to display multiple links within a small space. They provide navigation flexibility without long download times. You can define the appearance of the pop-up menu so it matches the overall look and feel of your website. A pop-up menu is similar to a table: each menu item is like a table cell. You can customize the menu by choosing from a selection of font types, cell colors, and background image styles.

Creating pop-up menus in Adobe Fireworks CS5

In the following steps, you will first create entries for a pop-up menu, then set the menu's appearance and position.

To create entries for a pop-up menu:

1. Start Adobe Fireworks CS5.
2. Open or create the image that will trigger the pop-up menu.

Note: The trigger image may be a text object or a graphic. Be sure to set the canvas dimensions to account for the size of the pop-up menu; you can trim the canvas after you build the menu to adjust the size.
3. Click the trigger image to select it.
4. Select Edit > Insert > Rectangular Slice to insert a slice over the trigger image (**Figure 1**).

Note: To create a slice that is not rectangular, you can use the Polygon Slice tool. See Fireworks help for more information.

When a slice is selected, a circle with cross hairs appears in the center of the slice. This is called a *behavior handle*.

5. Click the behavior handle and select Add Pop-up Menu from the context menu (**Figure 2**).

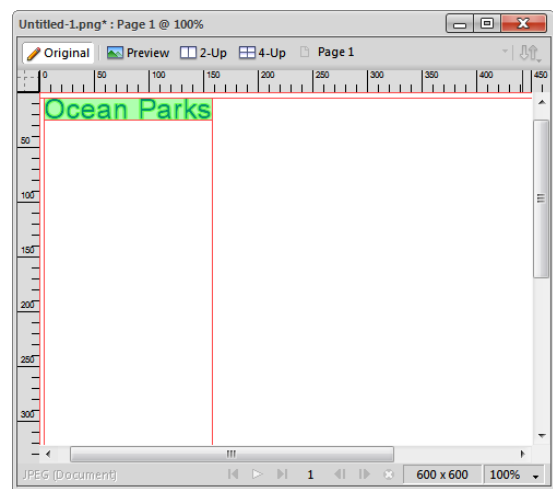


Figure 1 Slice

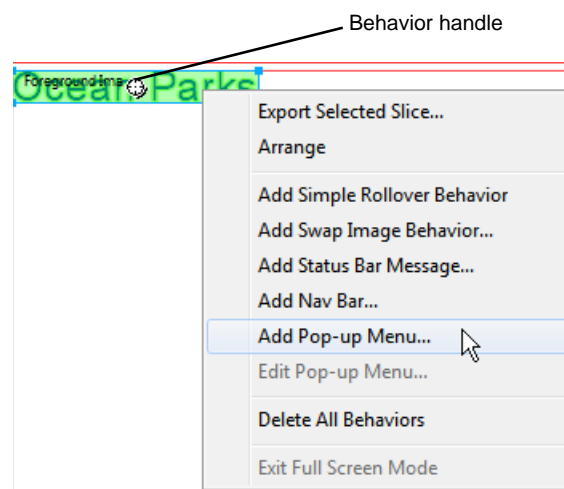


Figure 2 Behavior handle context menu

The Pop-up Menu Editor appears (**Figure 3**).

6. In the Content tab of the Pop-up Menu Editor, click twice in the text column to place the insertion point in the first Text box. Enter the text for a menu item. Click in the Link box, and enter the name of the file it links to.
7. To add a new menu item, click the Add Menu (+) button and repeat step 6 (**Figure 4**).
8. To delete a menu item, select the item and click the Delete Menu (-) button.
9. After you have entered all the menu items, click Next or click the Appearance tab.

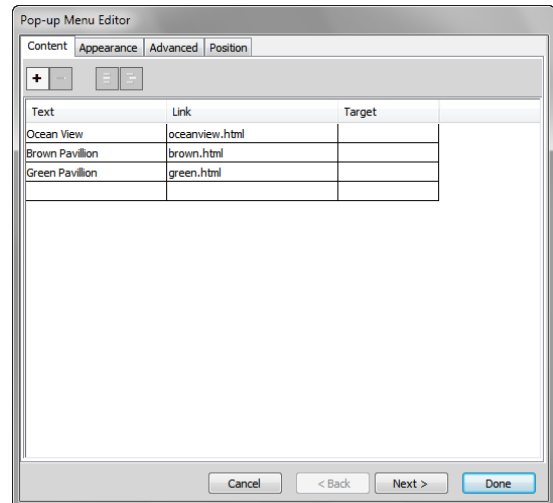


Figure 3 Pop-up menu editor

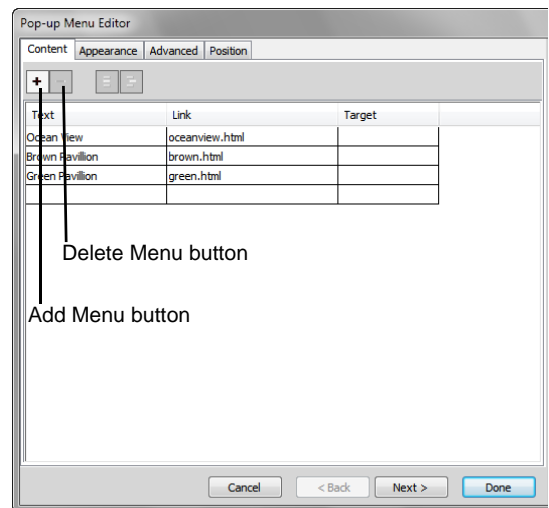


Figure 4 Pop-up Menu Editor with menu entries

Setting the appearance of a pop-up menu

On the Appearance tab of the Pop-up Menu Editor, you can format the text, apply graphic styles to the Over and Up states, and select vertical or horizontal orientation for the pop-up menu.

To set the appearance of a pop-up menu:

1. Continue where you left off in the previous task.
2. Select either HTML or Image for Cells (**Figure 5**).

Note: *HTML* sets the menu's appearance using only HTML code; this setting produces pages with smaller file sizes. *Image* gives you a selection of graphic image styles to use as the cell background; this setting produces pages with larger file sizes.

3. Select Vertical Menu or Horizontal Menu from the Orientation pop-up menu near the top of the Appearance tab.

Settings you choose immediately appear in the preview window near the bottom of the Appearance tab.

4. Select font type, font size, and text styles for your menu items.
5. Select text and background (Cell) colors for Up State and Over State.

These states are similar to button states. The *Up state* of a menu item is its default appearance in the menu. The *Over state* is the appearance of the menu item when the pointer passes over it.

6. If Image is selected as the cell type, select a graphical style for the Up state and the Over state (**Figure 6**).
7. Click Next or click the Advanced tab (**Figure 7**) if you want to change cell or border attributes.

Typically you can use the default settings in the Advanced tab.

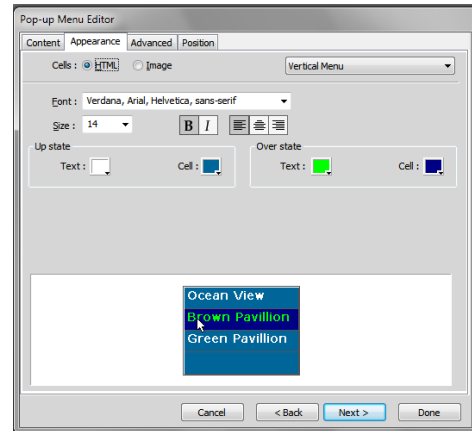


Figure 5 Appearance tab of Pop-up Menu Editor

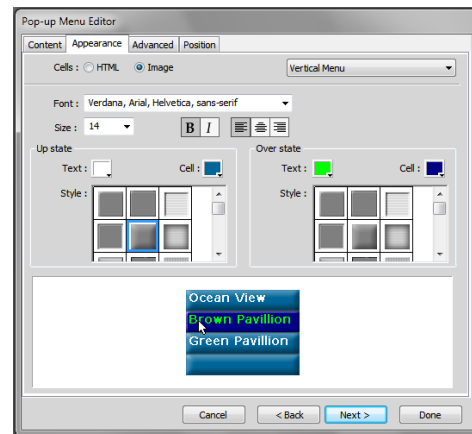


Figure 6 Graphical style for cells

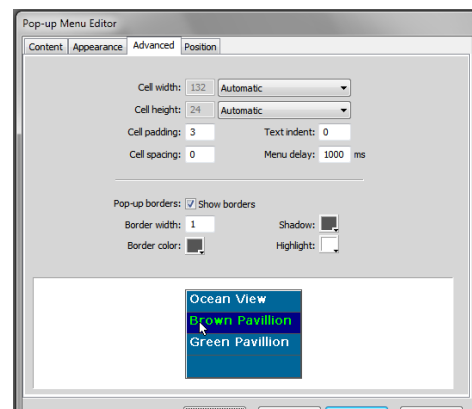


Figure 7 Advanced tab of Pop-up Menu Editor

To set the position of a pop-up menu:

1. Continue where you left off in the previous task.
2. Click Next or click the Position tab in the Pop-up Menu Editor (**Figure 8**).
3. Click a Menu Position button to position the pop-up menu relative to the trigger slice.

Note: Alternatively, you can enter X and Y coordinates. Coordinates of 0, 0 align the upper left corner of the pop-up menu with the upper left corner of the trigger slice.

4. Click Done. Then save your file.
5. To preview your pop-up menu, select File > Preview In Browser and select a browser from the submenu.

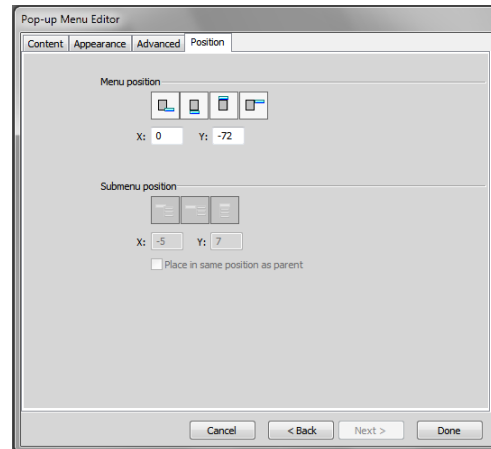


Figure 8 Position tab of Pop-up Menu Editor

Editing a pop-up menu

You edit a pop-up menu through the same context menu with which you created the pop-up menu.

To edit a pop-up menu:

1. To edit a pop-up menu, select the slice to which your menu is attached and double-click the pop-up menu's blue outline in the workspace, or click the behavior handle and select Edit Pop-up Menu (**Figure 9**).

The Pop-up Menu Editor opens.

2. Set options in the Pop-up Menu Editor just as you did when you created your pop-up menu.

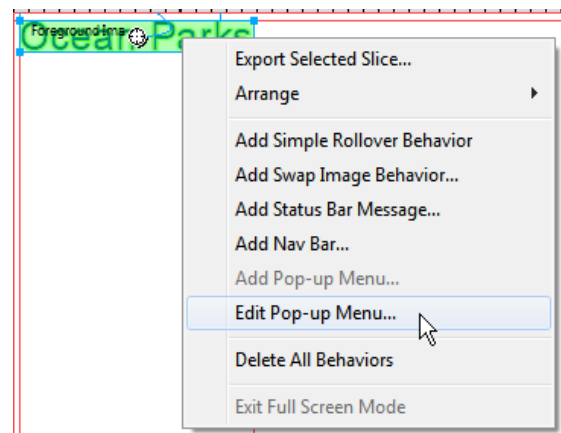


Figure 9 Behavior handle context menu

Exporting a pop-up menu for use in Adobe Dreamweaver CS5

To save the pop-up menu so it will be active on your website, export the document as HTML.

To export a pop-up menu:

1. While still in Fireworks, trim any excess canvas surrounding your image by choosing **Modify > Canvas > Trim Canvas**.
2. Save the file.
3. Select **File > Export**.

The Export dialog box opens (**Figure 10**).

4. Navigate to your local root folder.
5. Give the pop-up menu a short, descriptive name.
6. Select **HTML And Images** in the Export menu.
7. Make sure the option **Put Images In Subfolder** is selected.

Note: Putting all the exported image files in a subfolder is a good way to manage those files.

8. Save (Windows) or Export (Mac OS).
9. Save your document and close Fireworks.

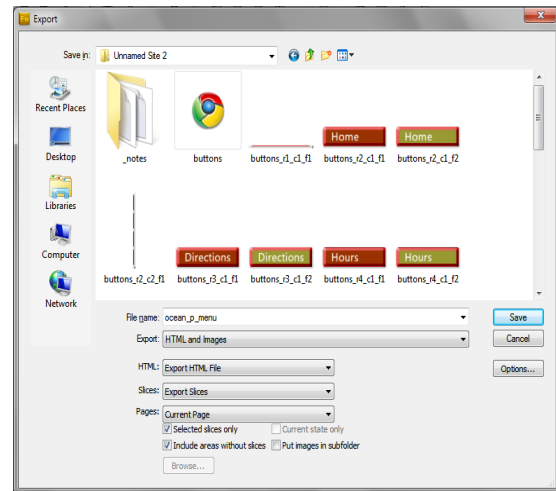


Figure 10 Export dialog box

Importing a pop-up menu into Dreamweaver

You insert a pop-up menu into Dreamweaver as you would anything else, by using the Insert panel.

To insert a pop-up menu into Dreamweaver:

1. Start Dreamweaver.
2. Open the document into which you want to import the pop-up menu.
3. Position the insertion point where you want the pop-up menu to appear. You can also place the pop-up menu within a div for more precise positioning of the menu.
4. Make sure the Common category is selected in the Insert panel. Click the down arrow on the Images button, and select Fireworks HTML (**Figure 11**).

The Insert Fireworks HTML dialog box opens (**Figure 12**).

5. Click Browse, select the pop-up menu HTML file, and click Open.

Note: The Images subfolder contains the sliced images for your pop-up menu.

6. OK to close the Insert Fireworks HTML dialog box.

The pop-up menu is inserted into your Dreamweaver document.

7. Save your Dreamweaver document.
8. Select File > Preview In Browser and select a browser from the submenu to test the menu and the links for the menu items.

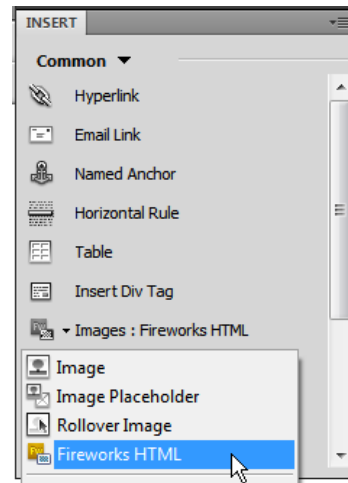


Figure 11 Insert Fireworks HTML

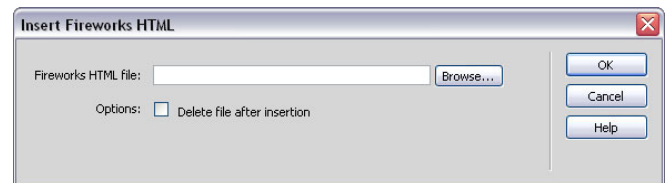


Figure 12 Insert Fireworks HTML dialog box