

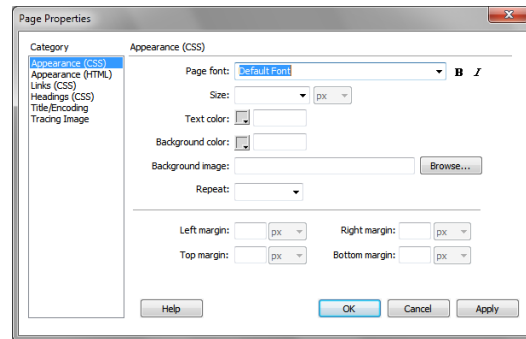
# How to set document properties

You can use the Page Properties dialog box to set page layout and formatting properties, such as a default font family, font size, font color, and background color.

## Setting document properties

To open the Page Properties dialog box:

1. Open a document in Adobe Dreamweaver CS5.
2. Select **Modify > Page Properties**.  
The Page Properties dialog box opens (**Figure 1**).



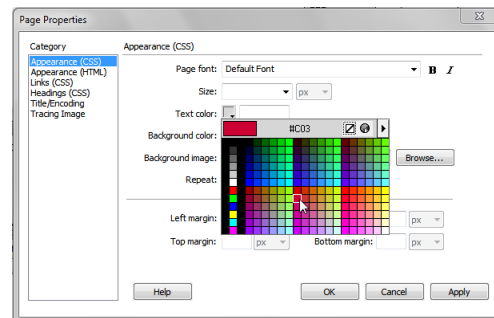
**Figure 1** Page Properties dialog box

To change the default font for a page:

1. Select a font in the Page Font pop-up menu.
2. Select a font size in the Size pop-up menu.  
Any unformatted text will appear in the selected font and font size.

To change the default text color for a page:

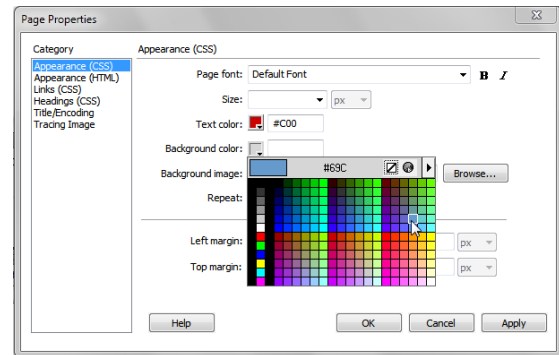
1. Click the Text Color box.
2. Select a color in the color picker (**Figure 2**).



**Figure 2** Text color picker

To change the background color of a page:

1. Click the Background Color box.
2. Select a color in the color picker (**Figure 3**).
3. Click OK.



**Figure 3** Background color picker